

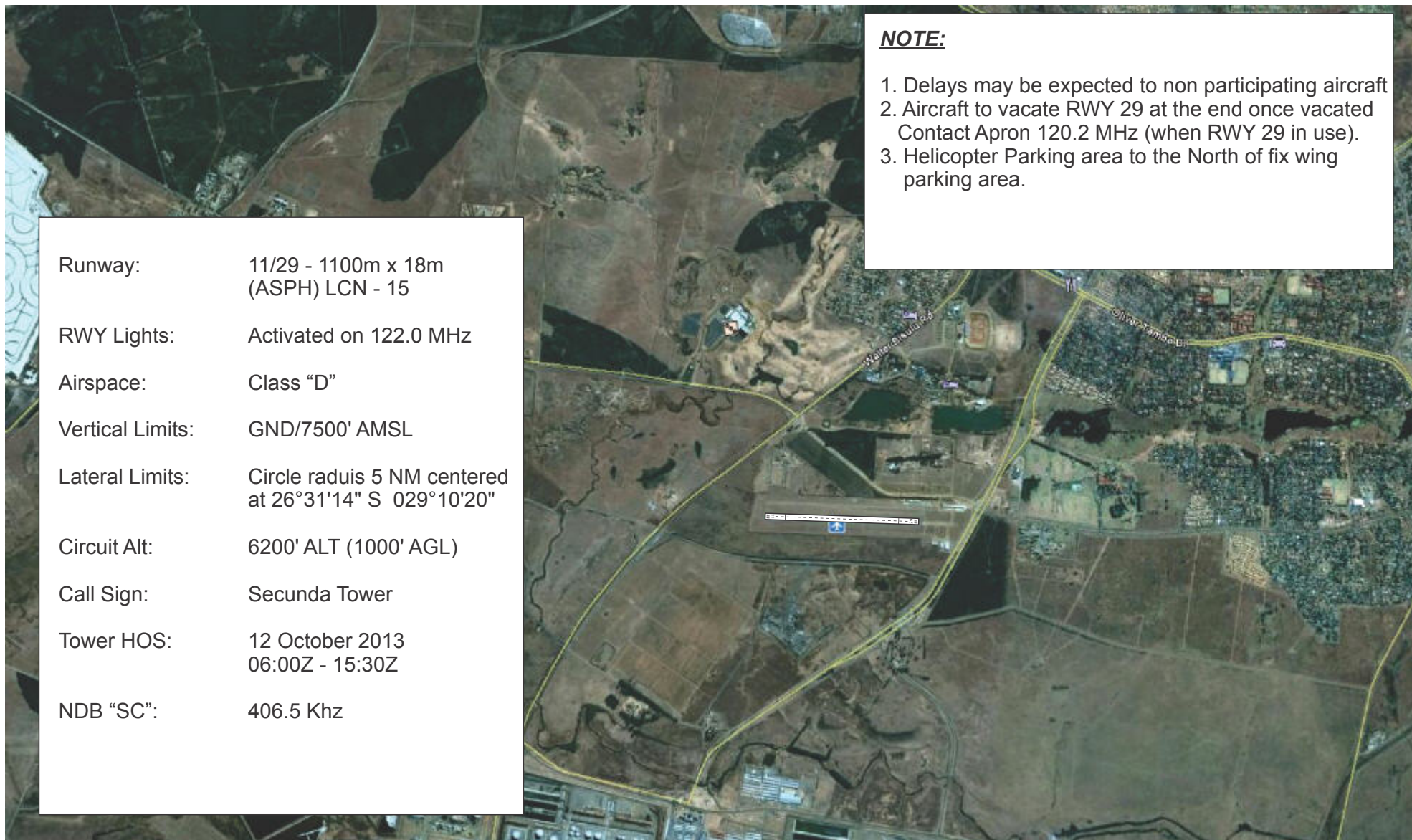
Secunda FASC AIR SHOW

Airfield Info

26°31'14" S
029°10'20" E

ELEV 5250 FT AMSL

Tower - 122.0 MHz
ATIS - 121.0 MHz
Apron - 120.2 MHz



Runway: 11/29 - 1100m x 18m
(ASPH) LCN - 15

RWY Lights: Activated on 122.0 MHz

Airspace: Class "D"

Vertical Limits: GND/7500' AMSL

Lateral Limits: Circle radius 5 NM centered
at 26°31'14" S 029°10'20"

Circuit Alt: 6200' ALT (1000' AGL)

Call Sign: Secunda Tower

Tower HOS: 12 October 2013
06:00Z - 15:30Z

NDB "SC": 406.5 KHz

NOTE:

1. Delays may be expected to non participating aircraft
2. Aircraft to vacate RWY 29 at the end once vacated
Contact Apron 120.2 MHz (when RWY 29 in use).
3. Helicopter Parking area to the North of fix wing
parking area.

Secunda FASC AIR SHOW

Airfield Info
Additional

26°31'14" S
029°10'20" E

ELEV 5250 FT AMSL

Tower - 122.0 MHz
ATIS - 121.0 MHz
Apron - 120.2 MHz



Imagery is for reference only

Valid for 12 October 2013 ONLY

Non Official Chart